



# The Friendly Post

---

News from ICCF-US Friendly Matches from around the world - Issue 4, June 2013

Greetings again from ICCF-US Friendly Match Central! This issue continues our process of bringing you the news from our collective set of Friendly Matches. To explain to any new recipients, Friendly Matches are national team versus national team chess contests where the overall team outcomes do not matter beyond bragging rights. Everyone is eligible to play. The ICCF-US uses both a standing set of interested players and new participants in virtually every match. Each match participant plays two rated games, one with white and one with black, against a single opponent of nearly identical rating.

## Sign Up for Either/Both of This Fall's Friendly Matches!

There are **two Friendly Matches** being organized to start this Fall.

As already advertised previously, we will be playing a match against **Romania**. The last time we played that country in a Friendly Match, it was 2008-2009 and we won with a score of 36 - 30. Let's repeat that feat! The official start date for this match will be early September, give or take a couple weeks.

A Friendly Match against **Peru** is also being organized. We have not played that country in quite a while. In fact the last time was a 20-board match started back in 1997. (Thanks go to Alex Dunne, again, for finding out this information for us!) We are shooting for an official start date for this match in mid-September.

Details for signing up for either of these matches are at the end of this newsletter.

Just so you know, there is also a Friendly Match already scheduled with **Austria** to start June 2014. Please do not ask to be signed up for this FM yet, however. I will again advertise this match when it gets closer to that date.

## Lots has been happening since the last issue!!

You can always find the current results from any of our Friendly Matches by visiting [www.iccf-webchess.com](http://www.iccf-webchess.com), Tables and Results, Friendly Matches, but this newsletter will also make it easy for you to stay up-to-date. The past three issues listed all of our matches from 1/1/07 onward. This issue lists only those already in progress but not yet completed. The current standings (through 6/14/13) are:

	<u>Opponent</u>	<u>Server/Email/Postal</u>	<u>Start Date</u>	<u>Result (USA v. other)</u>
1.	Germany	Server	5/25/11	37.5 - 62.5 (2 games still ongoing)
2.	Sweden	Server	5/1/12	54.5 - 23.5 (12 games still ongoing)
3.	England	Server	8/1/12	30.5 - 31.5 (6 games still ongoing)
4.	Australia/NZ	Server	11/1/12	41.0 - 28.0 (41 games still ongoing)
5.	Russia	Server	2/1/13	23.0 - 39.0 (100 games still ongoing)
6.	Panama	Server	3/4/13	4.0 - 1.0 (19 games still ongoing)
7.	Cape Verde	Server	3/24/13	3.0 - 2.0 (25 games still ongoing)
8.	Norway	Server	3/31/13	2.5 - 2.5 (39 games still ongoing)
9.	Netherlands	Server	4/11/13	6.5 - 11.5 (110 games still ongoing)
10.	Czech Republic	Server	4/25/13	4.5 - 8.5 (99 games still ongoing)
11.	Portugal	Server	4/25/13	4.5 - 3.5 (46 games still ongoing)

TOTAL USA RESULTS since 1/1/07:

678.0 - 713.0 **(48.7%)**

*Tactics is knowing what to do when there is something to do. Strategy is knowing what to do when there is nothing to do. - Tartakower*

**[In this issue, we quote the chess wisdom of GM Savielly Tartakower.]**

## Interesting Tidbits:

(a) The listed **percentage of wins/losses** (48.7%) remained exactly the same from February 2013 despite the completion of another 170 games.

(b) **Concerning Russia v. USA:** This historic first Friendly Match between the USA and Russia started this past February. It is the largest friendly match the USA has had in a very long time. We are fielding 81 boards, well more than the 63 boards we fielded against the Ukraine in December 2010.

(c) **Concerning Panama v. USA:** This is Panama's first FM ever (another historic first) as this match was organized just after that country became a Member Federation to the ICCF.

(d) **Concerning Norway v. USA:** The first FM between Norway and the USA since 1984.

(e) **Concerning the Netherlands v. USA:** The first FM between the Netherlands and the USA since 1985.

(f) **Concerning the Czech Republic v. USA:** This is a re-match compared to our loss to the Czech Republic just 2 years ago, but this match is more than twice the size!! There were 25 boards in that earlier match. There are 56 boards in the current one!

(g) **Match (versus game) win/loss record** since 1/1/07: 7 wins, 8 losses (46.7%)

<u>USA Won</u>	<u>USA Lost</u>
Argentina (2010)	Czech Republic (2011)
England (2008)	France (2010)
Finland (2009)	Germany (2011)*
Hong Kong (2010)	Germany (2008 - Women's only)
Romania (2008)	Italy (2010)
Scotland (2008)	Spain (2008)
Sweden (2012)*	Sweden (2007)
	Ukraine (2010)

\* Still officially ongoing, but the final team outcome is already determined.

As you can see from the list of ongoing FMs, the match with England is nearly done and still too close to call. If we win that FM, our overall Win/Loss record could become 50%. If our lead in the Australia/New Zealand FM holds up, we can then move into a plus score! Go teams!!!

*It is always better to sacrifice your opponent's men. - Tartakower*



### Where to Find Us

The ICCF-US home website is at [www.iccfus.com](http://www.iccfus.com). You can always find copies of "*The Friendly Post*" at that site, with a link on the left in the home page. The server for playing games is at [www.iccf-webchess.com](http://www.iccf-webchess.com). Contact Dennis Doren at [dmdoren@yahoo.com](mailto:dmdoren@yahoo.com) concerning anything related to Friendly Matches.



### The People Behind the Organization

Thanks to the people who keep it all running, the ICCF-US Administrators:

**International Master Corky Schakel**, USA National Federation Representative

**Senior International Master Tom Biedermann**, Treasurer

**Senior International Master Dan Perry**, Webmaster

**International Master Bob Rizzo**, Norms and Communications Organizer

**Senior International Master Kristo Miettinen**, Tournament Organizer, Tournament Director

**International Arbiter Franklin Campbell**, Tournament Organizer, Tournament Director

**Wolff Morrow**, US Correspondence Chess Championship (USCCC) Organizer

**Glen Shields**, North America/Pacific Zone (NAPZ) Tournament Organizer

Yours truly,

Dennis Doren, Friendly Matches Organizer ([dmdoren@yahoo.com](mailto:dmdoren@yahoo.com))

## *A threat is more powerful than its execution - Tartakower*

### Games from the Matches

Each newsletter will show games and/or interesting positions from the ICCF-US friendly matches. Do you have a game you would like published here? A position with a great move? Our intention is to show games from across rating levels, so do not be shy about submitting your games (to Dennis Doren at [dmdoren@yahoo.com](mailto:dmdoren@yahoo.com)). You can also offer your own commentary, or just leave that to us (which you can review pre-publication) if you prefer.

The featured game this issue is from the England - USA Friendly Match started 8/1/12, the one still ongoing, so this game is "fresh". Jon Leisner, one of our newly described FM Honor Roll players (see described in the "Elite" section below), came up with a very strong piece-for-two-pawns sacrifice. The resulting endgame, involving Jon's three connected passed pawns, proved too much for his opponent.

This issue, I am trying something new. If you wish a "pgn" copy of the game, here is the URL. Please let me know what you think of this addition:

<http://www.iccf-webchess.com/GetPGN.aspx?id=401165>

### **Phillip J. Becket (2044) - Jon Leisner (2066)**

(Annotations by Dennis Doren)

1.e4 e5 2.Nf3 Nc6 3.Bb5 a6 4.Bxc6 dxc6 5.d4 exd4 6.Qxd4 Qxd4 7.Nxd4 Bd7 8.Nc3 O-O-O

9.f3 (This is a "chess engine" kind of move. A computer program will come up with this, but it is rarely played in either OTB or correspondence chess.)

9...Ne7 10.Be3 Ng6 11.O-O-O Be7 12.Nde2 b6

13.Bf2 (Presumably planning Bg3. He changes his mind in a few moves, however.)

13...Kb7

14.b3 (White's play has been without significant errors, but it seems passive overall, foregoing ideas such as Nf5 by playing 12.Nde2, by playing 13.Bf2 instead of the more aggressive f4, and now taking time to give his king some room but weakening squares near his K at the same time. The result is that Black has achieved equality, and seems to have slightly more options for his pieces than does White.)

Ba3+ 15.Kb1

15...Rhe8 (The R could also have been activated by 15...h5 planning a K-side attack.)

16.Bd4 (White's B is misplaced here, even though it appears to gain a tempo due to Black's unguarded g-pawn. Doubling R's on the d-file seems better, or effectively doing so by preparing to trade one set of R's after Black moves his Bd7 and then bringing the second R to d1.)

16...f6 17.Rhe1

17...c5 (Gaining the tempo back, but doing something useful in the process as well.)

18.Be3

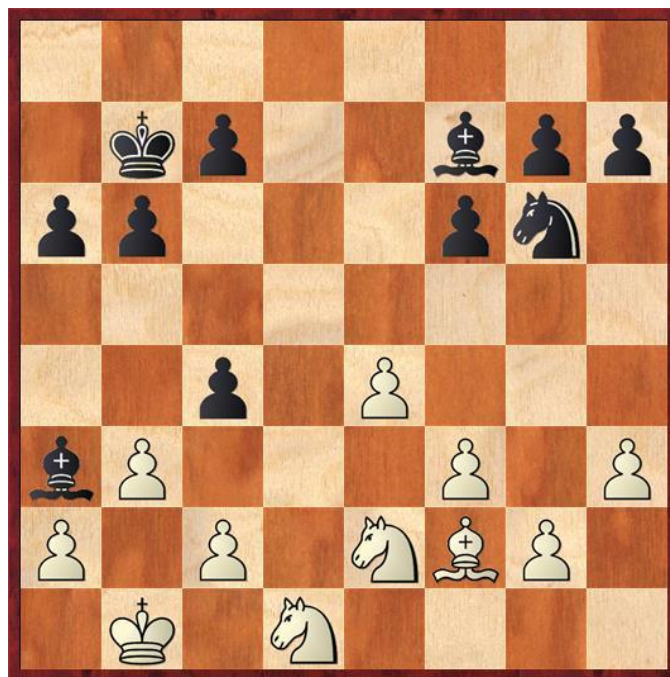
18...c4 (Nice idea. If 19.bc3, Ne5 gives Black an advantage.)

19.h3 Be6

20.Bf2 (20.Nd4 seems better.)

20...Bf7 21.Rxd8 Rxd8 22.Rd1 Rxd1+ 23.Nxd1

Black's pieces are more active, his doubled pawn can be traded any time, and he has the two B's versus B & N. A chess engine gives Black only a small advantage. From an endgame perspective, however, Black seems ahead. But how does one proceed?



Position after 23.Nxd1

23...Ne5 24.Bg3 cxb3 25.cxb3 Nd3 26.Nec3 Bc5 27.Kc2 Nb4+ 28.Kd2 a5

Jon's answer to the question: bring pieces to the Q-side where he had the pawn majority, and start pushing the pawns.

29.Bh2 (This B just does not seem to know where to go. And now what for Black?)



Position after 29...Bh2

29...Nxa2 (!!?) A chess engine does not agree with this move, but that may be an error within the chess engine. The point of this sacrifice is purely positional, but not in a middle game tactical way, but with the far longer term endgame in mind instead.)

30.Nxa2 Bxb3 31.Nc1

31...Bc4 (Proper technique. In general, it is better not to trade pieces in an endgame until after the win is in sight. Additionally, Black holds onto the two B advantage. Those three connected passed pawns supported by Black's two Bs seem ominous.)

32.Nd3 Bf8

33.N1b2 (Not active enough. 33.Ne3 was better, though probably not enough to save the day for White.)

33...Bg8

34.e5 (It seems optimistic to believe there is enough time for White first to create K-side pawn weaknesses and then have time to attack them. 34.Kc3 seems better, so as to position as much as White can in front of Black's oncoming army of pawns.)

34...c5 35.exf6 gxf6 36.Nf2 Kc6 37.Ne4 Be7

38.Nd1 (38.Bg1 seems in keeping with White's imminent needs, but Black is already positionally winning.)

38...b5 39.Bf4 b4 40.Ne3

40...Be6 (Necessary to stop White's potential Nf5.)

41.g4 (41.Kd3 was better, but it probably no longer matters given Black's skillful play.)

41...a4 42.Kc1 a3 43.Kb1 c4 44.Bb8 Kb6 45.Bd6 Bxd6 46.Nxd6 c3 47.Ne4 Ka5  
48.f4 Bg8 49.h4 a2+ 50.Ka1 Bf7 0-1

(51.g5 f5 52.Nxc3 bc3 53.h5 Bb3 54.g6 hg6 55.h6 Bg8 56.h7 Bxh7 57.Kxa2 Kb4 is one possible continuation. Nice game Jon!)



*The move is there, but you must see it. - Tartakower*

*The blunders are all there, waiting to be made. - Tartakower*

#### The "FRIENDLY MATCH ELITE

Both as an incentive for participation as well as a reward for never silently withdrawing, we recently began a new status within the world of ICCF-US Friendly Matches, a status whose reward includes ***reduced fees*** for future Friendly Matches.

The designation is called the Friendly Match Elite. The Elite are the people who have played in at least 7 Friendly Matches (since 1/1/07) and have never silently withdrawn. As a token of thanks for their fine and regular participation, these players will have their fees reduced for each of the next 3 Friendly Matches in which they play, from the usual \$6 to \$4 per match.



To everyone: **Anyone can reach this status!** Just play in enough Friendly Matches and never default a game through silent withdrawal. Your total number of Friendly Matches will automatically be tallied without any effort by you. (If you wish to know your current number of FM's played to date, just ask Dennis at [dmdoren@yahoo.com](mailto:dmdoren@yahoo.com).)

So who are the current Friendly Match Elite? Congrats to those 25 players on the ICCF-US current list:

**Richard Aiken; John Ballow, IM; Edward Barr; Kyle Biedermann; Thomas Biedermann, SIM; Michael Brooks; Chris Cendrowski; Steven Chilson; Gregory W. Cross; Gary Deskin; Ken Edwards; Gordon Everitt; Michael G. Hayes; Harry Ingersol; Edward Lupiński; Roger Martindale; Charles Merrow; Jean L. Moeckel; Cesar Musitani, IM; Donald Randolph; Fred Sharpell; Carl L. Sieftring, SIM; Lester Weiss; David V. White; & William C. Young, III**

Even beyond are the 14 people on the **ICCF-US FM Honor Roll** (those people who achieved Elite status, received their reduced fees for 3 matches, and of course, continue to demonstrate both ongoing interest and integrity in playing FMs):

**David Ballard; Dennis Doren; James R. Ellis; Leonid Gleyzer; Joseph Korman; Jon S. Leisner; Edwin Meiners; Chris O'Connell; Larry Parsons; Michael Quirk; Mark Robledo, Sr.; Patrick J. Ryan; Corky Schakel, IM; & Gerald K. Thomas**

Are you next? Who is just one Friendly Match away from becoming Elite?

**Mark Capron; Robert Fass; Russell Haag; Alex Herrera; William Lindberg; John Moldovan; Alexander Relyea; Wesley Underwood; Anthony Zawadski**

To everyone: you need not complete play from your 7th FM to become FM Elite and have reduced fees for 3 of your next FMs - just start play in your 7th FM, be up-to-date in your fee payments, and continue to avoid defaulting a game.





### You Can Play on the USA Team in a Friendly Match!

You, too, can play in a Friendly Match, no matter the degree to which you have played in an ICCF-US event of any kind previously. Each match consists of two games (one white, one black) against the same opponent who is very close in rating to yours. The total fee is \$6 for your participation per match (unless you are FM Elite as described above, when the fee is \$4 for your next 3 FMs).

Just decide if you are interested in the match versus **Romania**, the match versus **Peru**, or **both**. Then contact Dennis Doren, the ICCF-US Friendly Match Organizer, at [dmdoren@yahoo.com](mailto:dmdoren@yahoo.com) and tell him your specific interest in playing.

Do **NOT** send any money to Dennis or anyone else at this point to pay for your participation in either of the listed FMs! You will only need to pay (through Paypal, money order, or by check) when all arrangements have been finalized. Dennis will tell you when that is.

**JUST SO YOU KNOW:** The number of players expressing interest in any specific Friendly Match can be and often is larger than the other team can meet. Not everyone who expresses interest in any specific FM will likely be able to play. In other words, your "signing up" for a specific FM does not mean you will automatically be selected to play in that FM. Selections are based both on stated interest and a strong attempt to match our players to opponents with near equal ratings. If you are not selected for a specific match, you can be assured that you will be given all possible priority for placing you in other FMs (which you can then accept or decline).

*Every chess player should have a hobby. - Tartakower*